



Highcliffe School Student Bulletin

Monday 8th – Friday 12th January 2018: Week B

General Notices

World Book Day 2018 (MHY)

Happy New Year!

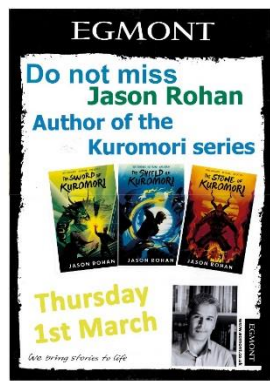
I am pleased to tell you Mr. James and I are organising our activities for World Book Day 2018.

On Thursday 1st March, we will be welcoming authors Jason Rohan and Julie Ratcliffe to the school. Jason & Julie will be running workshops for year 8 students, which will include scene setting, plot structure and character creation. Julie will also be returning on Friday 9th March to run further workshops.

Jason & Julie are looking forward to meeting as many students as possible and will be available to sign books in the library during break & lunchtime.

Books are now available to purchase via WisePay, and any purchased, will be signed for you by Jason or Julie. If you would like to see the books or for any further information, please see Ms. Haley in the library.

We are delighted to be able to run this event and hope to build on the success of last year!



Year 8 Geography - Natural History Museum (JCE)

On Monday 15th January, the Geography Department will be taking 40 year 8 students to the Natural History Museum in London. Letters are available for students to collect from Friday 5th January and available on the school website. Places are limited and you will be able to pay via Wisepay from midday on Monday 8th January. (Please note we will not be able to accept cash or cheques before midday).

Are you in Year 9? Are you interested in participating in a Debate Club?

If you are interested in discussing debating issues, arguing for a point of view, and challenging others' ideas, this could be the opportunity for you. If interested, please let me (Mr Bryden) know. You can come and see me in En1, or drop me an e-mail.

Year 11 Science Booster sessions (RCN)

Please be aware that Year 11 Science Booster sessions start next week. A letter regarding this will be given to all year 11 students. The programme of Boosters until half term is as follows:

Date	Year 11 Open Session
January 10 th 2018 WEDNESDAY	Chemistry Sc8
January 17 th 2018 WEDNESDAY	Chemistry Sc8
January 24 th 2018 WEDNESDAY	Chemistry Sc8
January 31 st 2018 WEDNESDAY	Chemistry Sc8
February 7 th 2018 WEDNESDAY	Chemistry Sc8
HALF TERM ALL FURTHER SESSIONS ON TUESDAY	
February 20 th 2018	Physics Sc6
February 27 th 2018	Physics Sc6
March 6 th 2018	Physics Sc6
March 13 th 2018	Physics Sc6
March 20 th 2018	Physics Sc6
March 27 th 2018	Biology Sc4
EASTER	
April 17 th 2018	Biology Sc4
April 24 th 2018	Biology Sc4
May 1 st 2018	Biology Sc4
May 8 th 2018	Biology Sc4
May 15 th 2018	Skills Sc10
May 22 nd 2018	Skills Sc1
HALF TERM	

Our Japanese friends are coming ... (DBN)

Would you like to make friends with someone from Japan? In March, Highcliffe School will once again be welcoming 14 Japanese boys from our partner school in Hiroshima. We are looking for 14 families to welcome and host them. It is a fantastic opportunity to really get to know someone from a different culture. Please note the following:

- The students are from a boys' school, but you do not have to be a boy to host. Plenty of female students have hosted!
- You are not expected to be able to speak any Japanese.
- Sixth Formers are welcome to host too!

Many families at our school have hosted over the year and had a really enjoyable and enriching experience as a result. They will be here from Thursday 15th March to Sunday 25th March (departing at 9am). If interested, look out for a letter at the start of 2018 or ask Mr Bryden.

"A friend for the future"

Music Notices

Day	Lunch	After school
Monday	Percussion Club EX3 All year welcome	
Tuesday	Highcliffe Choir and Choir Band EX2 All year welcome	Concert Band EX3 Grade 3+ on your instrument
Wednesday	Ukulele/Guitar EX2 All years welcome	Musical Theatre Choir EX1 All years welcome Creative use of Music Technology EX5 All years welcome
Thursday	Senior Choir EX5 Audition Only Music Theory EX2 All years welcome	
Friday	Jamming Club EX2 All years welcome	

PE Notices

FIXTURES/PRACTICES 8 th -12 th January		
	LUNCHTIME (1.25-1.55pm)	AFTER SCHOOL (3.05-4.10pm)
Monday	Year 7 basketball Club (NJS)	
Tuesday	Year 10 & 11 GCSE Netball Club (HWH/CFM)	U16 Girls Football v Ringwood (H) (CFM) Table Tennis Club (3.05-4.30pm) Year 9 football Club (NJS)
Wednesday	Year 8 Basketball Club (NJS)	6th Form Football v Burgate (A) (SHM) Year 7 & 8 Girls Football @ Arnewood (CFM & HWH) Year 9,10 and 11 Netball Club (MWR) No Year 7 & 8 Netball Club Year 9 and 10 Rugby Club (JDN)
Thursday		Year 7 & 8 Rugby Club (JDN) Year 7-9 Girls Football Club (CFM/HWH) Year 10/11 Trampolining Club (LSN) Girls Rugby Club (WES)
Friday		Year 9 Football v Poole Grammar (H) (NJS) KO 2.15pm

The Best Words. In the Best Place.

This week's "Word of the Week" is ...

Benevolent

What are you doing to improve your vocabulary?

Have a go at the quiz below. What does **benevolent** mean?

Benevolent means ...

a/ This is an adjective meaning well-meaning and kind

b/ The name of a type of vole looked after by someone called Ben.

c/ This means really violent and angry.

The Answer

The answer is A: Well-meaning and kind

"benevolent" is an adjective.

The noun is "benevolence"

Bene = this prefix comes from the Latin word "bene" meaning "good".

Volent = this comes from a Latin word meaning "will". It is connected with "volunteer"

What's the opposite?

The antonym (word with opposite meaning) is **malevolent**. ("mal" comes from Latin and means "bad")

Examples:

Christmas is a time when people are more benevolent than usual.

Benevolence is an important quality in any person's character.

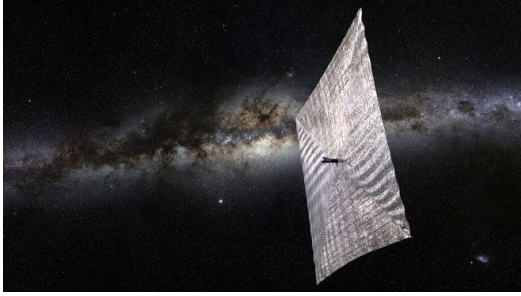
"Beware the WhatsApp hype: Mark Zuckerberg is no benevolent overlord"

People also talk of a "benevolent dictatorship".

Critical Thinking: Look at the headline about Mark Zuckerberg. Why might he think that Facebook and its development is benevolent? Why might some people say it's not benevolent?

Commendation Opportunities: "Verdict" is not a particularly difficult word – but do you use it? That's your challenge. Try and use this word in class in writing or in speech. You might get commended for an effective use of it! Break-through commendation: If you use it incorrectly first time, but try again, you might receive a break-through commendation!

Project Starshot - Lasers for interstellar flight, Dr B Brocklesby, University of Southampton (PES)



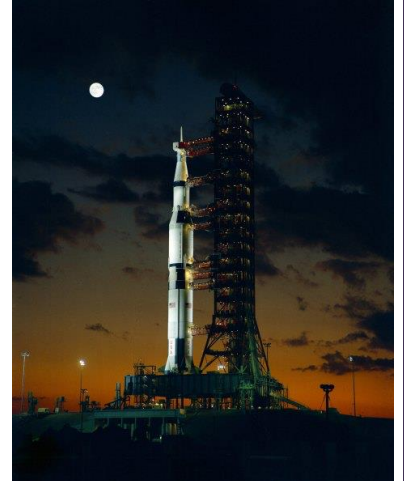
Dr Bill Brocklesby spoke to the Year 12 Highcliffe Physics students about a project that he is hoping to be involved with in the near future. The proposal is to send a spacecraft to the nearest star with a chance of life around it, no small feat of engineering it must be said.

The project, hoped to be completed in the next 30 years, is being partly funded by Mark Zuckerberg of Facebook fame amongst others, and is hoped to propel a spacecraft a lot faster than the 24000mph (approximately 30 times faster than sound) needed to escape Earth. The method of propulsion is revolutionary, although the idea is nearly 100 years old!

Currently 88% of a traditional rocket's mass, just to escape Earth, is the fuel load. Therefore, to propel a spacecraft at a fifth of the speed of light with traditional fuels would be impossible!

The idea is to use lasers that will shine onto a "sail" on the craft. This causes a chain of events resulting in the sail being pushed away from the light source. The students proved that even sunlight pushes down on us with a measurable force, although it is too small for us to notice!

The project plans to fire incredibly powerful lasers that are 100 million, million times more powerful than a laser pointer, at the sail. The laser beam is hoped to be a 1km square and will accelerate the spacecraft from a stationary start to a distance of 3 million km in only 100 seconds meaning it would have a speed of $\frac{1}{5}$ of the speed of light. Some very impressive figures!



The planned lasers are made in a similar way to standard electronic components and therefore should be more and more affordable in the next few years! That said, there will need to be 100 million small lasers all working together and being focused to steer the craft which will not be a simple task. The challenge is apparently not the science involved in the lasers themselves but the engineering needed to build the laser array and control it's direction and power.

The students were asking all manner of questions to Dr Brocklesby, and a great buzz was felt in the lab.

With the project still in its early stages, we are all hoping to see the return of Dr Brocklesby from Southampton University with some good news!



NEW Photography competition! - More info can be found on the website and on the door of AT5 or by asking Miss Eggleston.

Introducing

THE NATIONAL SCHOOL PHOTOGRAPHY

AWARDS 2017/18

Deadline: Weds 28th Feb 2018

by **fse**design in partnership with  **Manfrotto**
Imagine More

Could *you* be Britain's next TOP photographer?

Prizes include:

- Cameras & Accessories
- Photography day for your school
- Work Experience with Professional Photographers
- and more!

Pick your category:

- Post 16 - *School: A Lasting Impression*
- Secondary - *A Window into life at school*
- Primary - *School Spirit*

Closing date for entries: February 2018

Winners announced: March 2018

For more information on themes, judging & how to enter visit
www.fsedesign.co.uk/nspa

FSE is a specialist design agency supplying outstanding design and marketing services exclusively to the education sector.

fsedesign T: 01933 303520 E: enquiries@fsedesign.co.uk W: www.fsedesign.co.uk/nspa





Married with three adult sons and three grandchildren, Julie Ratcliffe is an honours graduate of the Open University (1988). She studied British social history and literature from 16th to 19th centuries, including comparative work between Britain and Europe and Britain and America.

Julie has enjoyed writing from childhood. She began writing children's stories when working for Bolton Public Libraries, and often read her work to visiting school children. However, she never attempted to have the stories published. She continued to invent stories for her three boys, but it is only now that she has decided to publish her work.

Although born and raised in the north west of England, Julie has lived in Christchurch, Dorset since 1980. Here she has become fascinated with the history of this ancient town with its medieval relics, beautiful, cathedral-sized Priory Church, two rivers and quays. The town's development has been well-documented throughout the ages; Christchurch can trace its Mayors back to the 12th century.

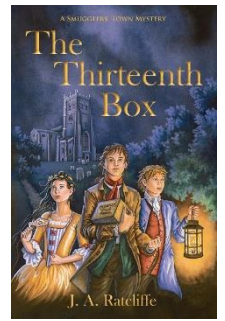
Julie is a member of the Society of Authors, the Society of Women Writers and Journalists, a member of the Christchurch History Society and she attends meetings of the Village Writers, who gather monthly in the New Forest.

The Thirteenth Box

'Nearly everyone in Christchurch is a smuggler, or at least takes in the spoils,' Will Gibbs tells his new friend. 'But somethin' different's goin' on.'

It's March 1780. Smuggling along England's coast is rife, and dangerous ... Boxes holding parts of a mysterious machine have been smuggled into a small, south coast town and the chase is on to capture them, especially the all-important thirteenth box.

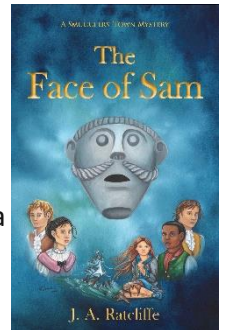
In this thrilling story of mystery and adventure, three young friends put themselves in great danger whilst trying to find out what's going on in their seemingly ordinary town. Who does the machine belong to? And amongst the strange characters they encounter, just who can they trust?



The Face of Sam

Christchurch, Hampshire, 1781; a ship is wrecked during a violent storm. A young girl, found in the church staring at a face carved in the stone, refuses to talk. Perinne Menniere tries to befriend the girl, who is hiding a secret. Will Gibbs, back from America with a curious new friend, has something on his mind and Danny Clarke's life is about to take a sinister turn.

As word spreads about the wreck and the girl, strangers appear in town, including smugglers from Kent on a journey of revenge. All the talk is of a missing cipher that leads to a treasure trove and before long the friends are drawn together again in a mystery that can only be solved by *The Face of Sam*.



The Thirteenth Box and *The Face of Sam* are from the *Smugglers' Town Mysteries* series. Set in 18th-century England, they are action-packed and full of colourful characters. With a historically correct setting and using real places which families can still visit, they give a fascinating insight into life at the time.



**Baby to Child
Resuscitation Course**
On
Saturday 24th February 2018
At
Careys Manor Hotel, Brockenhurst
9:30am – 11:30am

The course covers resuscitation and choking for Baby or Infant (newborn to 1 year old) and Child (1 year old to puberty).

This involves a full demonstration of techniques and then time for attendees to have a try themselves followed by questions. The cost of the course is £10 per person, which includes information handouts covering all aspects of the course and refreshments.

You are welcome to bring babies along, but please note we do not provide a sitting service.

If you would like further information or to book a place please visit our website and complete a booking form www.babyresuscitation.co.uk or email us at info@babyresuscitation.co.uk

This course is kindly sponsored by Careys Manor Hotel and donations



Baby Resuscitation is a not for profit community project